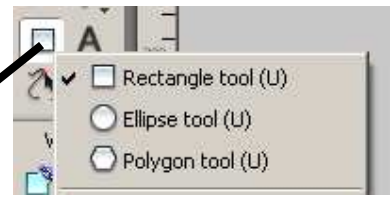
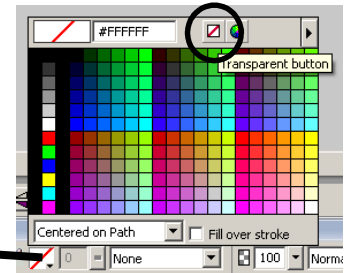
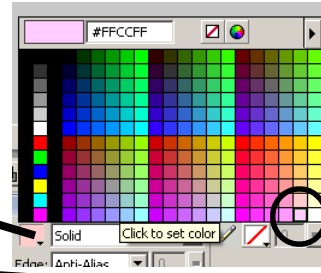


# Fireworks: Stick Lady

- ❑ Launch Fireworks and create a new blank document **300 by 450** pixels. (File->New)  
The canvas colour should be **white**.

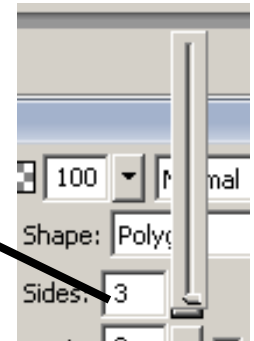


- ❑ Select the Ellipse tool. (Click and hold the toolbar button). Hold down the SHIFT key. This will let you draw a perfect circle for the face (instead of an ellipse). Choose a pale pink fill and no stroke.

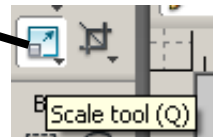


- ❑ Draw a rectangle for the body, and for the arms.

- ❑ You need to draw a triangle now for the skirt. Select the smart polygon tool. In the 'properties inspector', change the number of sides to 3. Draw a triangle.



- ❑ You can now use the Transform (Scale) tool to adjust the triangle to the right size and orientation.



- ❑ Finish off the stick lady by adding rectangle legs and feet.
- ❑ If you want to, you can take this further by adding different colour shapes for eyes, nose and mouth.

